

# CPC-WW-*line*

Whey curd pumps



**Pomac Pumps**

Pomac **CPC-WW** pumps are based on the frequently applied Pomac CP-WW whey curd pumps, based on the centrifugal principle and developed back in 1980.

Pumping whey curd through a Pomac **CPC-WW** is about pumping “large” quantities of whey curd at a relatively low pressure without damaging the curd part, thus avoiding the creation of “curd dust”.

Its unique combination of a closed impeller design, speed and pump casing geometry enables the Pomac **CPC-WW** to pump this whey curd “dust-free”. During this cycle the whey curd is like “carried” from suction to discharge port.

**CPC-WW** pumps are applied as transport pump between the whey curd preparation and the whey curd buffer tank or to the cheese tub/draining tub.

**CPC-WW** pumps can also be applied for pumping other vulnerable liquid additives like currants, raisins, figs and dates.

## Materials

---

All parts that come into contact with the pumped liquid are made of stainless steel, Materials nr. 1.4404. At request these parts can also be made of Materials nr. 1.4435 or Materials nr. 2.4602 (Hastelloy C22).

## Drives

---

Versions KAM, KAV and KAC are supplied with standard IEC (or other standard) motors in execution B5 flange motor or B3/B5 foot/flange motor.

The impeller is driven by a balanced stainless steel stub shaft, which is easy to install, to align and to adjust.

The electric motors can be supplied in all available efficiency-, isolation-, protection and voltage classes.

## Ultra clean

---

All liquid contact parts of the **CPC-WW** pumps have been designed following the EHEDG standards, which ensures an optimal cleanability during the CIP process.





## Applications

---

### Food Industry

- **Dairies**  
Milk, skimmed milk, butter milk, cheese milk, raw milk, cream, animal fats
- **Beverages**  
Fruit juices, soft drinks, beer, wine, spirits, liqueur, sugar solutions, syrups, water, concentrates, yeast
- **Foodstuffs**  
Animal and vegetable oils and fats, soups, sauces, spices, brine, water
- **Chocolate and sweets**  
Milk products, oils and fats, sugar solutions, syrups, flavouring, liqueur, spirits
- **Sugar**  
Syrups, sugar solutions, invert sugar
- **CIP & SIP cleaning processes**  
Sodium hydroxide, nitric acid, hot and cold water, other specific cleaning liquids



## Shaft sealing systems

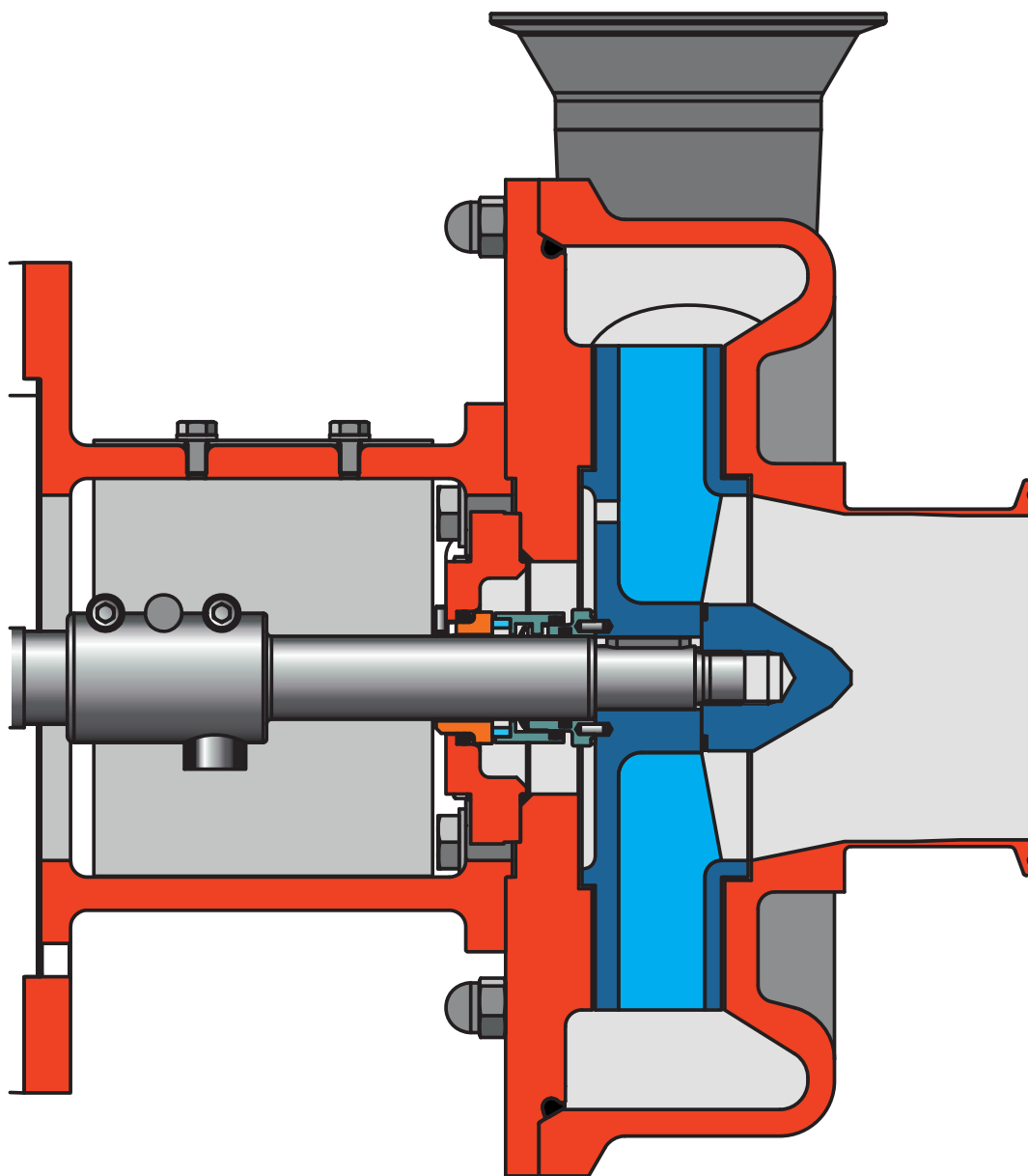
According to the hygienic standards of EHEDG the pumps can be supplied with several types of shaft sealing.

The mechanical seals are available in the following materials combinations:

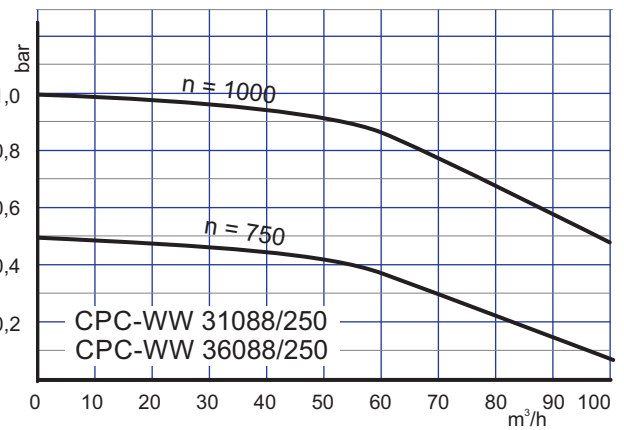
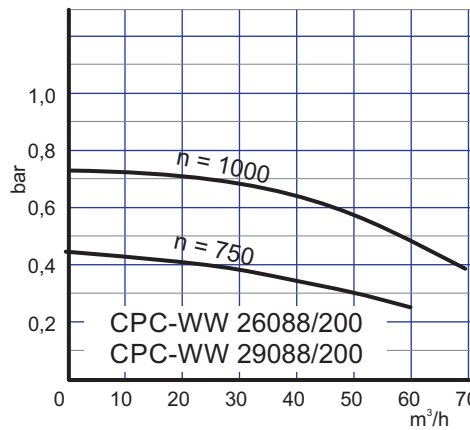
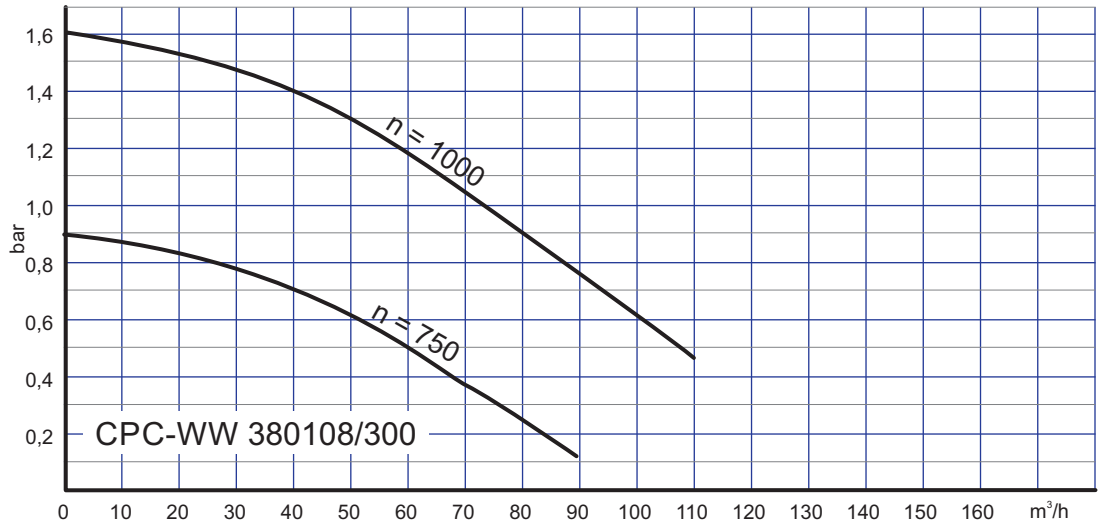
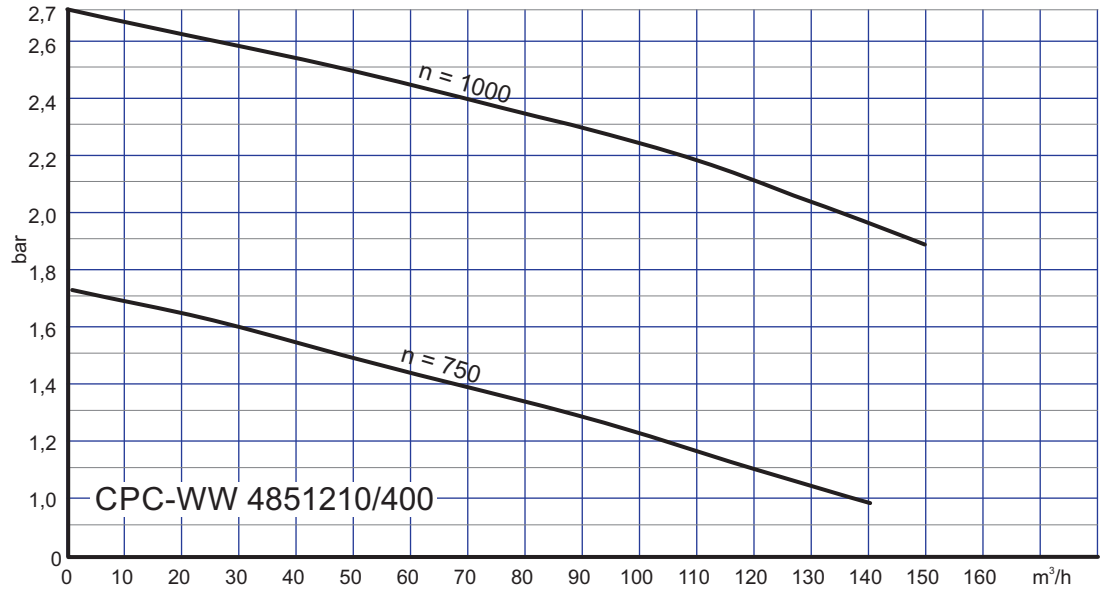
- carbon to CrMo-steel
- carbon to silicon carbide
- carbon to ceramic
- hard metal to hard metal
- silicon carbide top silicon carbide
- Tungsten carbide to tungsten carbide

The mechanical seals are available with EPDM, Viton, Perbunan and Teflon "O"-rings.

All materials comply with FDA - CFR 21 or the equivalent european standards.

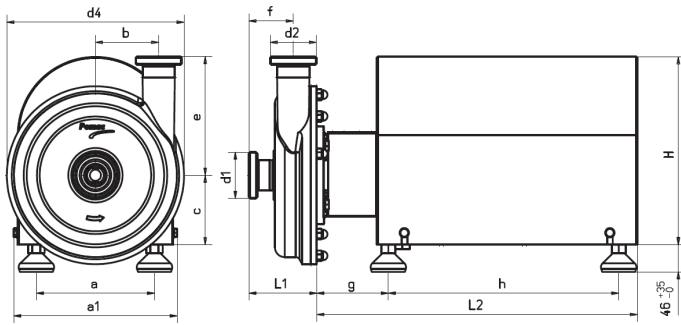


# Curves

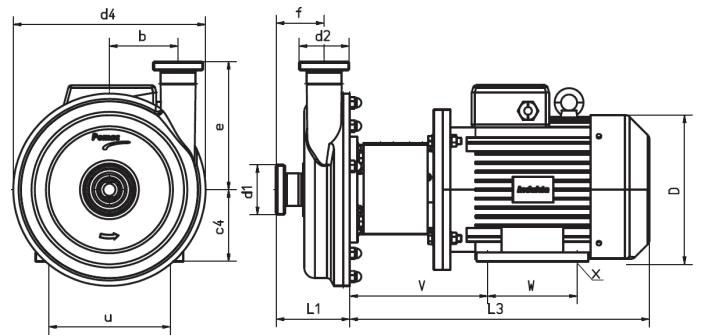


Dimensions

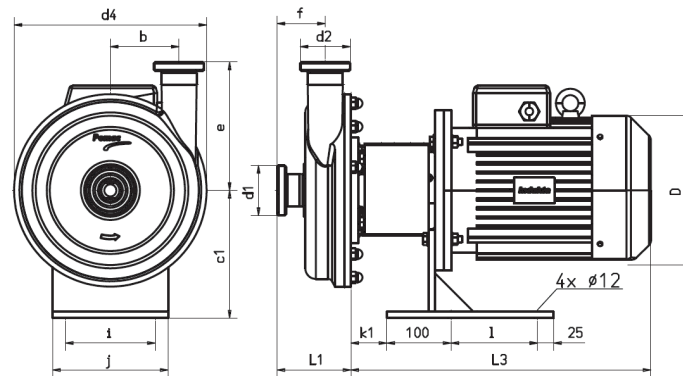
CPC - KAM



CPC - KAV



CPC - KAC



Motor size	Power [kW]				Build-in dimensions motors																			
	IEC	3000	1500	1000	750	a	a1	c	c1	c4	D	g	h	H	i	j	k1	l	u	V	W	x	L2	L3
80-A	0,75	0,55	0,37	0,18	160	228	85	180	80	150	110	368	246	120	150	43	110	125	185	100	10	458	361	
80-B	1,1	0,75	0,55	0,25																				373
90S	1,5	1,1	0,75	0,37	160	228	95	180	90	176	110	368	246	120	150	43	110	140	191	100	10	458	415	
90L-2	2,2			0,55																				415
90L-4,6,8		1,5	1,1																					440
100L-2,4A	3	2,2			200	278	105	194	100	202	121	390	316	140	180	53	135	160	208	140	12	543	505	
100L-4B		3																						525
100L-6,8A			1,5	0,75																				461
100L-8B				1,1																				0
112M-2,6,8	4		2,2	1,5	200	278	117	194	112	233	121	390	316	140	180	53	135	190	215	140	12	543	459	
112M-4		4																						486
132S-2A,6,8	5,5		3	2,2	250	328	137	219	132	266	121	452	356	160	230	73	165	216	254	140	12	605	548	
132S-2B,4	7,5	5,5																						586
132M-4,6A,8		7,5	4	3																	178			0
132M-6B			5,5																					0
160M	11	11	7,5	4	320	390	183		160	316	198	447	443					254	308	210	15	772	702	
				5,5																				35
160L		15	11	7,5																				746
180M	22	18,5			320	390	203		180	350	198	447	520					279	321	241	15	902	795	
180L		22	15	11																				35
200L	30	30	18,5		370	445	223		200	406	206	520	570					318	343	305	19	975	950	

## Dimensions

### Pump

Size	d1	d2	d alt.	d4	NW1	NW2	b	e	f	L1
26086	4"	4"	3"	300	100	80	100	200	106	161
26088"	4"	4"		340	100	100	118	353	223	304
36088	4"	4"		410	100	100	161	498	223	330
31088	4"	4"	3"	350	100	100	120	225	106	161
38088	4"	4"		425	100	100	151	275	101	162
4881210	6"	5"		532	150	125	195	330	102	182

## Connections

All pump types can be supplied with:

- Couplings acc. to DIN 11851, DIN 11864-1, SMS, etc.
- Tube connections acc. to NEN 1472 and DIN 1850
- Flange connections acc. to EN 1092-1, DIN 11864-2
- Tri-clamp acc. to ISO 2852, DIN 32676 and DIN 11864-3

## Configurations

The pumps can be supplied with the following completely interchangeable options:

- CPC-WW KAM** Pump with close coupled stainless steel encased motor and fitted with adjustable stainless steel legs.
- CPC-WW KAC** Pump with close coupled motor, mounted on a stainless steel bracket.
- CPC-WW KAV** Pump with close coupled motor, mounted on the motor feet.





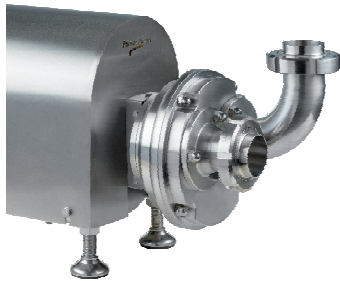
Besides the CPC-WW-line pump assortment in this brochure the Pomac delivery program comprises an extensive choice of hygienic pumps.

More detailed information on these pump types is available and will be sent to you on request.

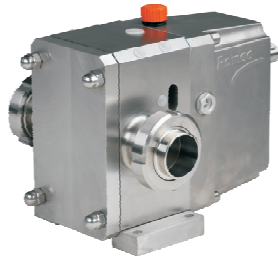
**CPC-ZA**  
**Self-priming stainless steel centrifugal pump**  
Q max = 200 m<sup>3</sup>/h  
H max = 90 m



**SP-LR**  
**Self-priming liquid ring pump**  
Q max = 60 m<sup>3</sup>/h  
H max = 50 m



**PLP**  
**Lobe pump**  
Q max = 110 m<sup>3</sup>/h  
P max = 25 bar



**PDSP**  
**Double screw pump**  
Q max = 90 m<sup>3</sup>/h  
P max = 16 bar



**CP-AGF**  
**Pump with channel impeller**  
Q max = 1000 m<sup>3</sup>/h  
H max = 25 m



**CPC**  
**Stainless steel centrifugal pump**  
Q max = 600 m<sup>3</sup>/h  
H max = 160 m



**CPC-PSVP**  
**Stainless steel centrifugal pump**  
Q max = 300 m<sup>3</sup>/h  
H max = 35 m



**CPC-HD**  
**Stainless steel centrifugal pump**  
Q max = 600 m<sup>3</sup>/h  
H max = 160 m



## Pomac Pumps

**Pomac b.v**  
Feithspark 13 - 9356 BX Tolbert  
P.O. Box 32 - 9356 ZG Tolbert  
Holland  
tel +31 (0)594 512877  
E-mail: [info@pomacpumps.com](mailto:info@pomacpumps.com)  
[www.pomacpumps.com](http://www.pomacpumps.com)